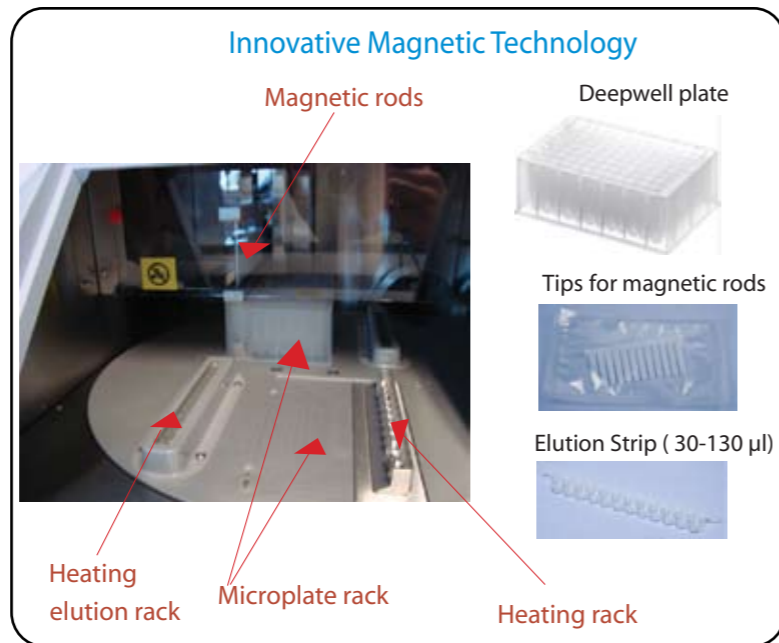


## AUTOMAG SOLUTION

- Easy-to-use automated extraction workstation with magnetic-bead based system
- Small footprint, robust robotics and closed system to reduce contamination
- Purifies DNA from 1-12 samples in 30 minutes - up to 24 samples without operator intervention
- Rapid implementation with pre-validated, preprogrammed protocols - FILL, PLACE and GO



**Validated kits:**  
 Crime Prep Adem-kit  
 Smart D-N-Adem-kit  
 for DNA databasing



### Ordering information

Product	Code number	Size
<b>Instrument</b>		
AutoMag	21101	each
<b>Consumables for AutoMag</b>		
Microtiter 96 deepwell plate	21102	50 pcs
12- tip comb for 96 DW plate	21103	50 pcs
Elution strip	21104	40 pcs
Combi pack for 96 DW plate	21105	each
<b>Kits</b>		
Crime Prep Adem-Kit	06210	96 preps
Smart D-N-Adem-Kit for Profiling (FTA cards)	06140	100 preps
Smart D-N-Adem-Kit for Profiling (swab)	06142	100 preps
<b>Magnets</b>		
Adem-Mag MODULO Classic for microtube	20105	each
Adem-Mag 96 for microplate	20106	each

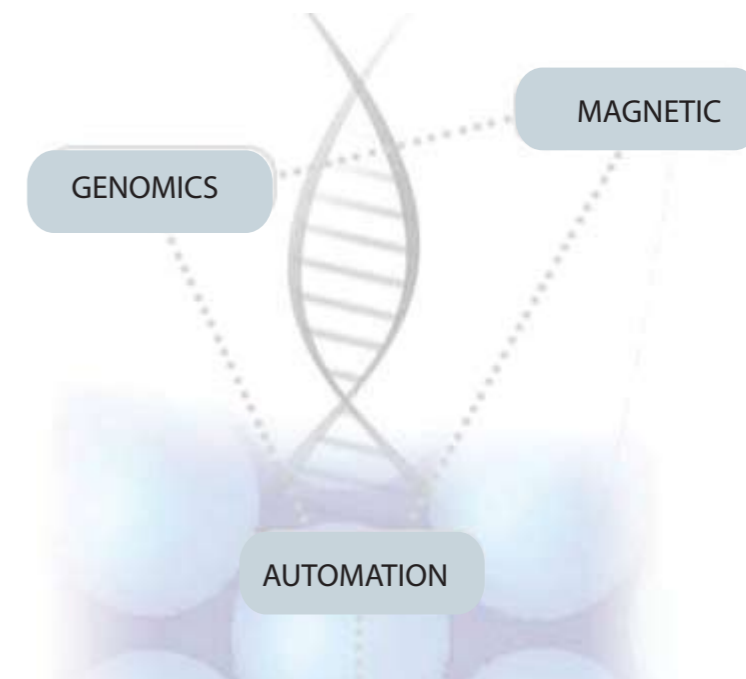
For more information please visit [www.ademtech.com](http://www.ademtech.com)

# DNA SAMPLE PREP FOR FORENSIC APPLICATIONS

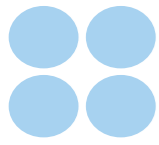
Smart D-N-Adem kit for Profiling: Database

Crime Prep Adem-kit : Casework

AutoMag Solution: Automated DNA Extraction



**ademtech**  
[www.ademtech.com](http://www.ademtech.com)



# PURIFIED AND NORMALIZED DNA CAPTURE

## FROM REFERENCE AND DATABASE SAMPLES

- More first run DNA Profiles
- Save time, save money, less re-analysis
- Cost competitive pricing - on kits and reagents
- Quick process and easy implementation on robotic workstation

**Smart D-N-Adem-Kit** delivers a standardized quantity of PCR quality from blood and buccals swabs and cards



**Kit components:**  
Lysis Buffer  
Magnetic particles  
Wash Buffer  
Elution Buffer

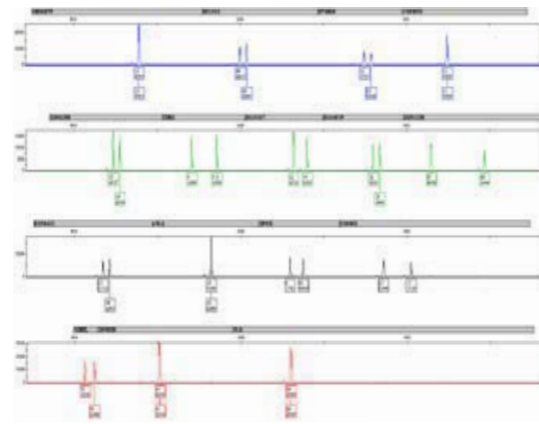


**FTA™ cards** no inhibition by residual FTA™

**Buccals Swabs** validated for cotton and nylon swabs with wood or plastic shafts

Higher quality DNA

Better First Pass Success

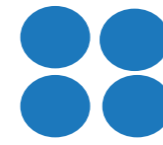


Electropherograms from buccal FTA™ cards. Sample analyzed on 3130 Genetic analyzer

**Validated for:**  
Identifiler®  
Identifiler plus®  
Power Plex HS®

**Validated sequencers:**

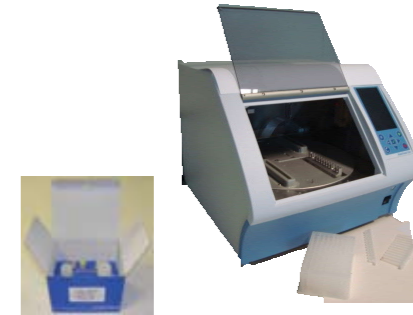
Sequencer	Samples type	First pass success rate (400 RFU threshold)	Peak height ratios	Number of samples tested
FTA™ cards	Blood (540 days)	100%	85 %	36
	Buccals cells	95.50%	87% (SD ± 7%)	2047
Swabs	Buccals cells	100%	86,6 (SD ± 2.8%)	21



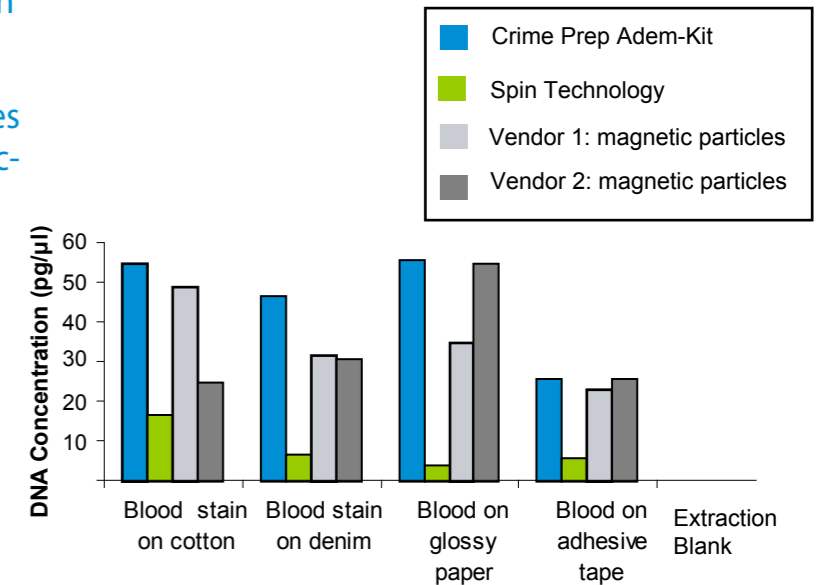
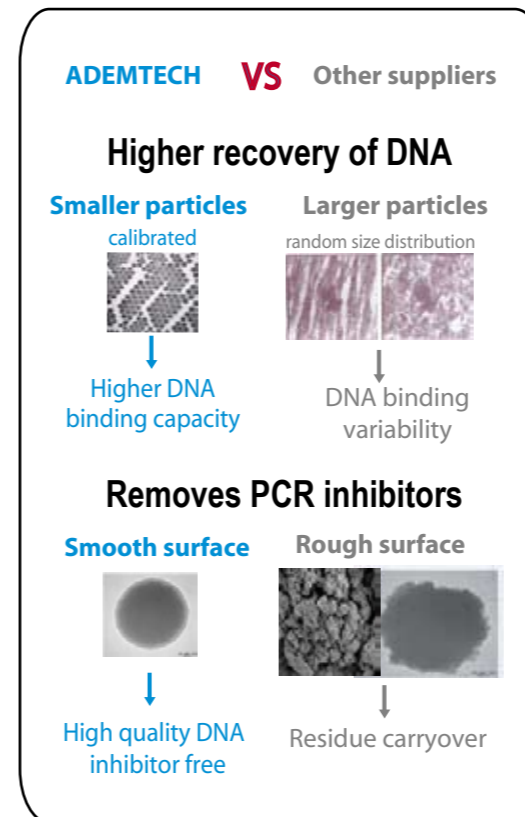
# DNA PURIFICATION FROM CASEWORK SAMPLES

- Specifically designed for forensic DNA laboratories : maximize quantity and quality of recovered DNA - ideal for routine and challenging samples
- Ultra - pure, DNA - STR quality DNA from **all casework samples**
- Optimized lysis for most forensic samples (trace evidence, adhesive tape, hair roots ...). Use larger volume for efficient extraction from absorbent materials (fabric, clothing...)
- Fully validated for all samples types - manual and automated extractions

**Crime Prep Adem-Kit** specifically designed for casework samples

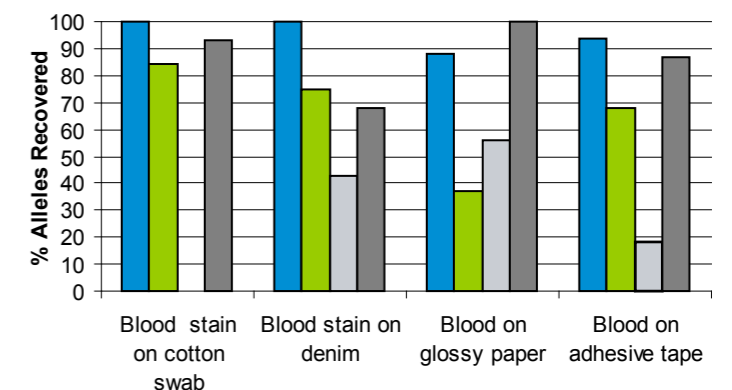


**Kit components:**  
Lysis Buffer  
Magnetic particles  
Proteinase K  
LB Buffer  
Wash Buffers  
Elution Buffer



**Figure 1. Improve DNA yield and concentration**

Quantifiler® Human kit results showing DNA Concentration from simulated casework samples using Crime Prep Adem-Kit and 3 other methods commonly used in human forensic laboratories. For all samples, Crime Prep Adem Kit exceeded or matched the concentration and total yield of DNA produced by other methods.



**Figure 2. Improve downstream performance**

Study showing the percent allele recovery using the AmpFISTRidentifiler® PCR plus kit. Crime Prep Adem-Kit matched or exceeded the total percentage of alleles recovered for each sample type when compared to 3 other purification methods commonly used in human identification laboratories.